

INSTRUCTIONS

Le casse-noisette



Découpe

Pli

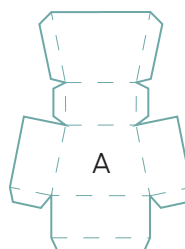
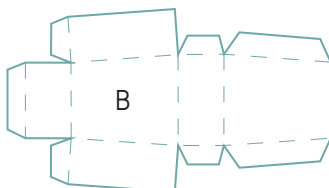
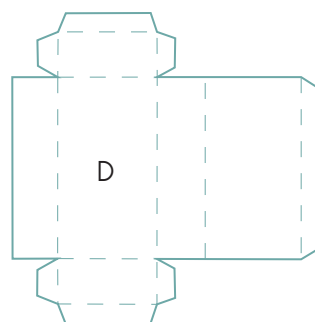
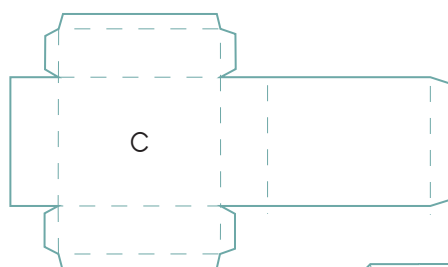
Colle



1 & 2

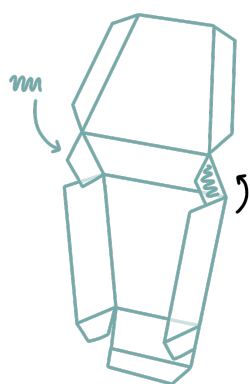
Découper les formes suivantes avec des ciseaux ou un scalpel (accompagné d'un adulte)

Ensuite plier les pièces A, B, C et D en suivant les pointillés

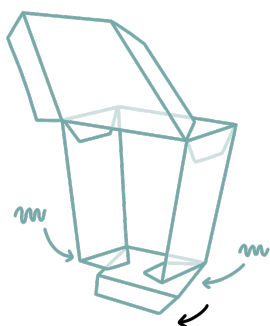


3

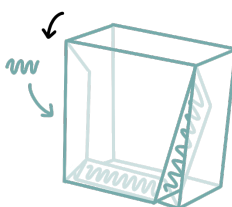
PIÈCE B



COLLER 2 LANGUETTES



COLLER 2 LANGUETTES

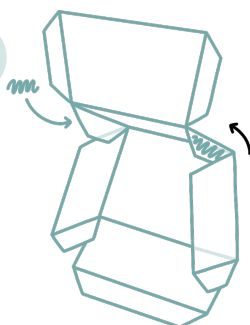


COLLER 3 LANGUETTES

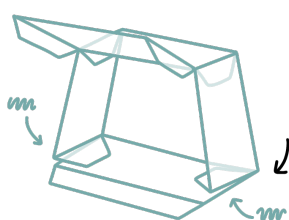
3

4

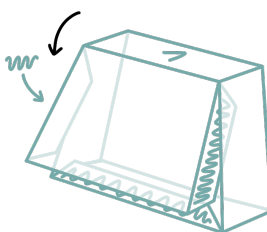
PIÈCE A



COLLER 2 LANGUETTES



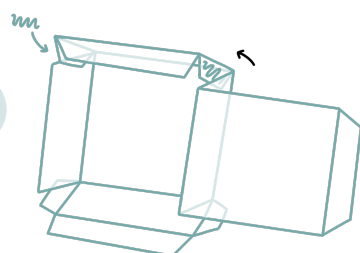
COLLER 2 LANGUETTES



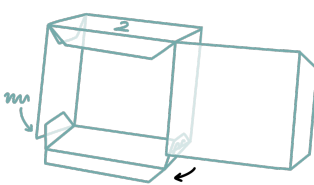
COLLER 3 LANGUETTES

5

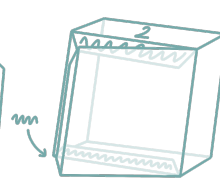
PIÈCES C&D



COLLER 2 LANGUETTES



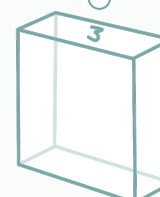
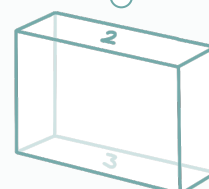
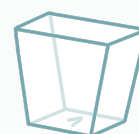
COLLER 2 LANGUETTES



COLLER 3 LANGUETTES



PAPER TOY FINAL



COLLER LES ÉLÉMENTS EN SUIVANT LES CHIFFRES